

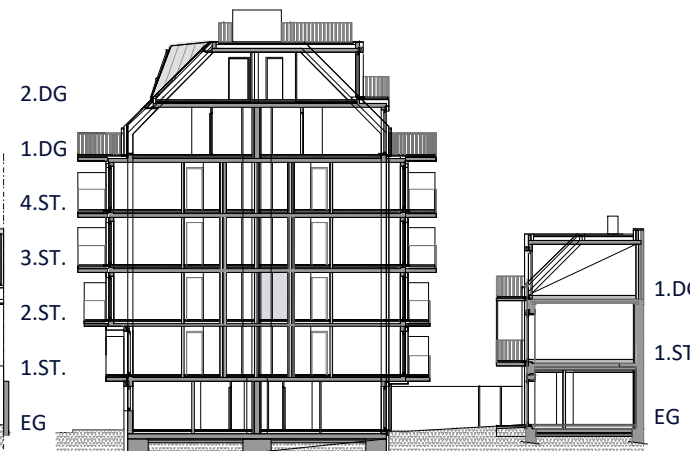
ANSICHT NORD-OST [o.M.]



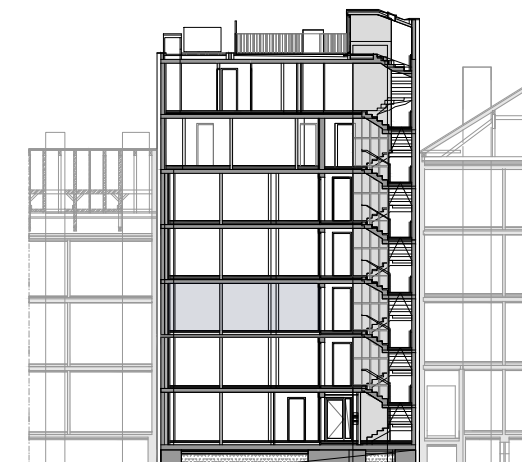
ANSICHT SÜD-WEST (MENGERGASSE) [o.M.]



ANSICHT SÜD-WEST [o.M.]



SYSTEMSCHNITT LÄNGS [o.M.]



SYSTEMSCHNITT QUER [o.M.]

GRUNDSTÜCK

KG 01603	DONAUFLD
GRST.NR.: 144	382m ²
SUMME:	382m ²
MENGERGASSE 11	1210 WIEN

WOHNNUTZFLÄCHEN

WOHNGEBAUDE STIEGE 1

TOP 01	EG	48,63m ²
TOP 02	EG	48,44m ²
TOP 03	1.STOCK	30,57m ²
TOP 04	1.STOCK	37,22m ²
TOP 05	1.STOCK	39,18m ²
TOP 06	1.STOCK	34,50m ²
TOP 07	2.STOCK	34,28m ²
TOP 08	2.STOCK	39,37m ²
TOP 09	2.STOCK	39,18m ²
TOP 10	2.STOCK	34,50m ²
TOP 11	3.STOCK	34,28m ²
TOP 12	3.STOCK	39,37m ²
TOP 13	3.STOCK	39,18m ²
TOP 14	3.STOCK	34,50m ²
TOP 15	4.STOCK	34,28m ²
TOP 16	4.STOCK	39,37m ²
TOP 17	4.STOCK	39,18m ²
TOP 18	4.STOCK	34,50m ²
TOP 19	DG 1	69,07m ²
TOP 20	DG 1	69,06m ²
TOP 21	DG 2	112,86m ²

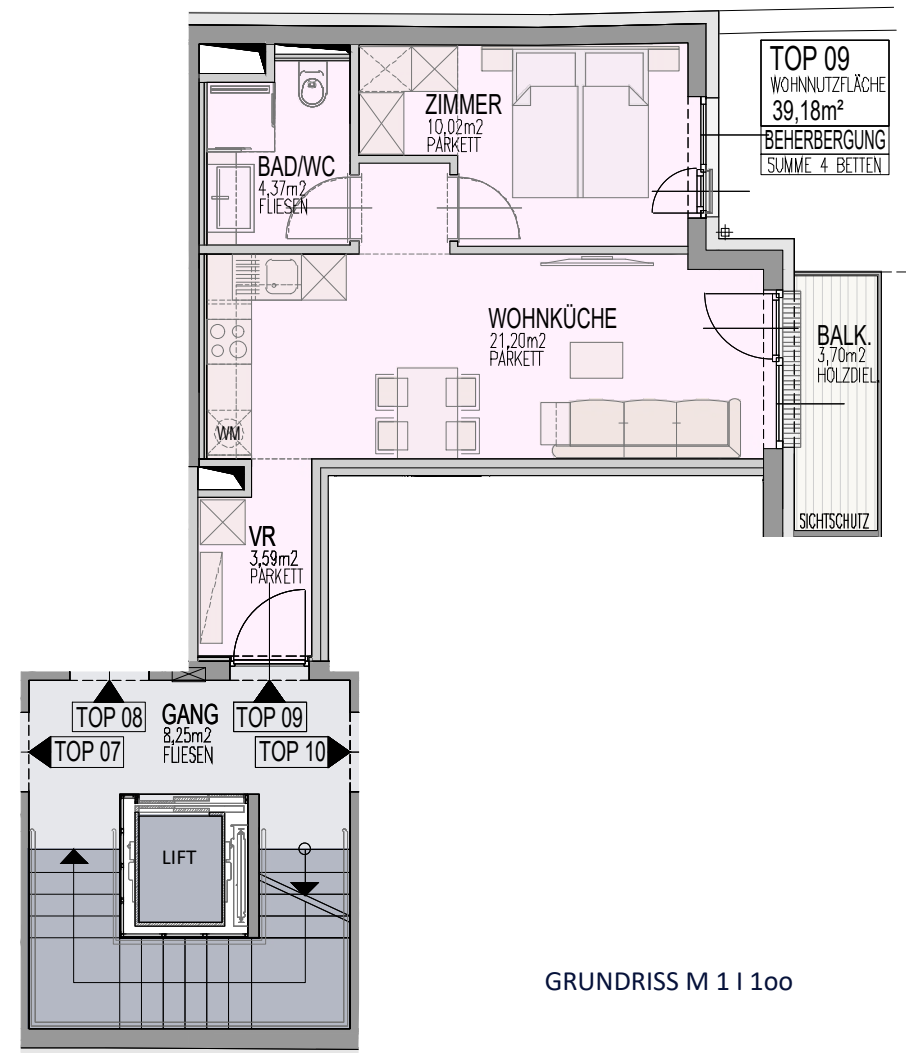
Σ WOHNGEBAUDE 931,52m²

HOFGEBAUDE STIEGE 2

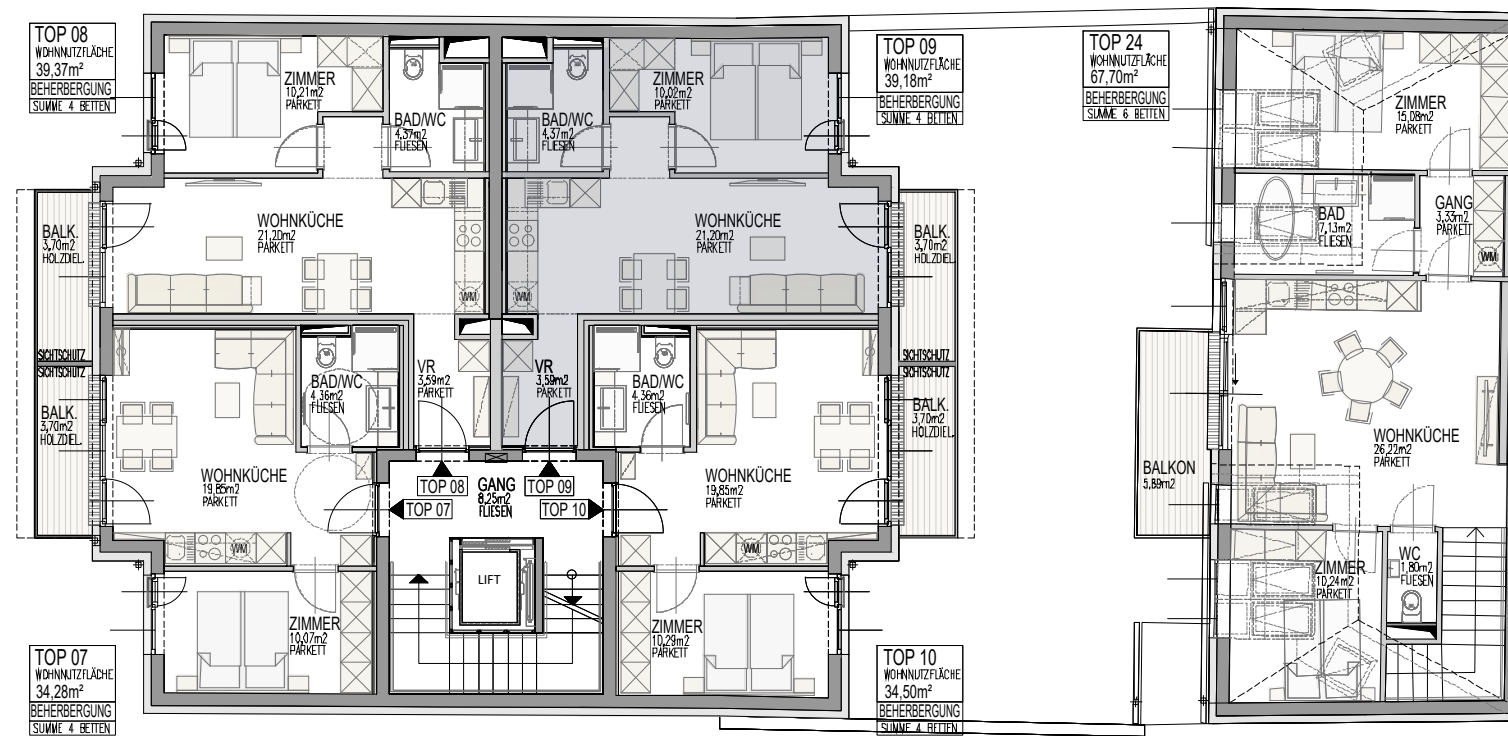
TOP 22	EG	35,47m ²
TOP 23	1.STOCK	52,08m ²
TOP 24	DG 1	67,70m ²

Σ HOFGEBAUDE 155,25m²

SUMME 1.086,77m²



GRUNDRISS M 1 | 100



GRUNDRISS M 1 | 150